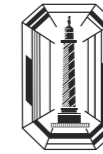




26 VENDÔME
Le style en héritage

BOUCHERON
PARIS



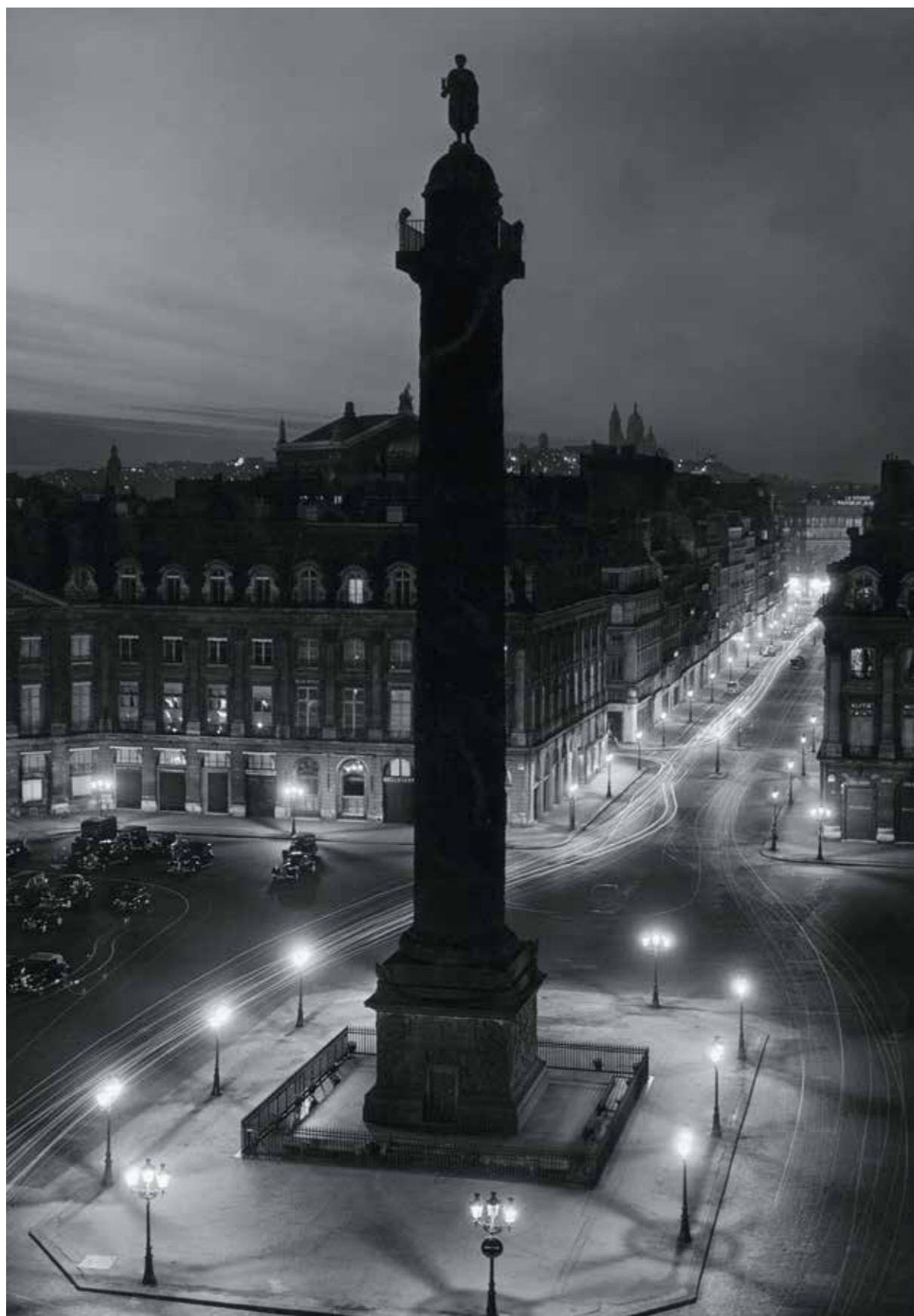
26 Vendôme. This name resembles a signature.
It alone captures the spirit of a remarkable Maison.

26 Vendôme: this unique address sits on the most
luminous corner of the square—the privilege of a
jeweller who got there first. And who could forget
that in 1893, Frédéric Boucheron was the first to
set up on what would become Paris' most
prestigious square ?

Is 26 Vendôme a code ? It's a mystery however
you look at it. One of creativity, inspiration and
production secrets that have never wandered
from their source.

Boucheron is as timeless as the square's central
column, striking out towards eternity like the hand
of some invisible clock.

26 VENDÔME
Le style en héritage



04.
NATURE TRIOMPHANTE

34.
ARCHITECTURE INSPIRÉE

64.
PORTÉ COUTURE

NATURE TRIOM PHIAN TE

This is an ode to Boucheron's beloved nature: the generous and untamed nature so richly expressed in its collections since the very beginning. 26 Vendôme, style as a legacy is a jewelled interpretation of an all-powerful natural realm. The artisans rose to the challenge of a radiant lily with a jonquil heart, the wheat of summer, feathers transforming into distant birds, and wild animals as a symbol of freedom. Boucheron once again succeeds in evoking the wonderful and fleeting sense of nature captured first-hand.

LYS RADIANT

The lily is a legendary flower, symbolising power, majesty and opulence for millennia. Boucheron's version is imbued with light. It beams. Lys Radiant is first and foremost a necklace. The luminous chain is joined by a superb yellow pear-shaped 20-carat diamond and surrounded by a halo of delicate yellow diamonds. Six rock crystal petals encrusted with diamonds complete the corolla. In Boucheron multi-wear tradition, the flower can be detached and worn as a stand-alone piece.



01.



08

02.



01. LYS RADIANT NECKLACE

SET WITH A 20,08 CTS YELLOW PEAR DIAMOND,
219,06 CTS ROCK CRYSTAL, PAVED WITH DIAMONDS, ON WHITE GOLD.
NECKLACE IN THE TRADITION OF THE MULTIWEAR.

02. LYS RADIANT RING

SET WITH A 3 CTS PEAR DIAMOND, ROCK CRYSTAL,
PAVED WITH DIAMONDS, ON WHITE GOLD.

03.



03. LYS RADIANT EARRINGS
SET WITH A 2,04 CTS PEAR DIAMOND
AND A 2,30 CTS PEAR DIAMOND, ROCK CRYSTAL,
PAVED WITH DIAMONDS, ON WHITE GOLD.

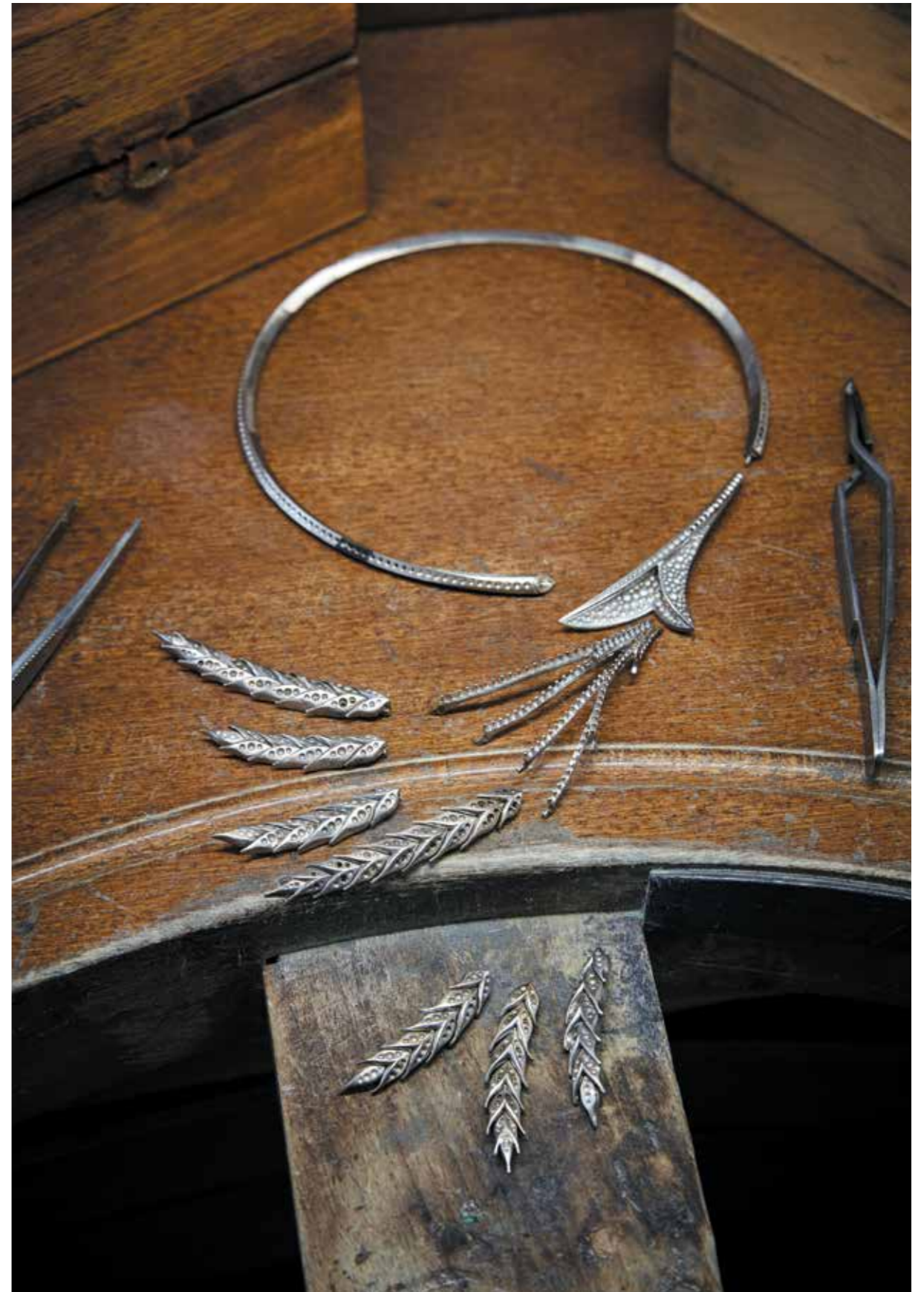


BLÉ D'ÉTÉ

Seven ears of wheat are a lucky charm in French folklore. Boucheron takes inspiration from this good omen with a new interpretation of the question mark necklace, a Boucheron classic dating back to 1889.

The ears of wheat appear to come to life around the neck as though swaying in the wind. They evoke late harvests as the golden season draws to a close, and the short silver nights when the fields of wheat are strewn with diamonds in the moonlight.

A bracelet and ring complete a luxurious and iconic set.



04.



05.



04. BLÉ D'ÉTÉ NECKLACE
PAVED WITH DIAMONDS, ON WHITE GOLD.

05. BLÉ D'ÉTÉ BRACELET
PAVED WITH DIAMONDS, ON WHITE GOLD.

06.

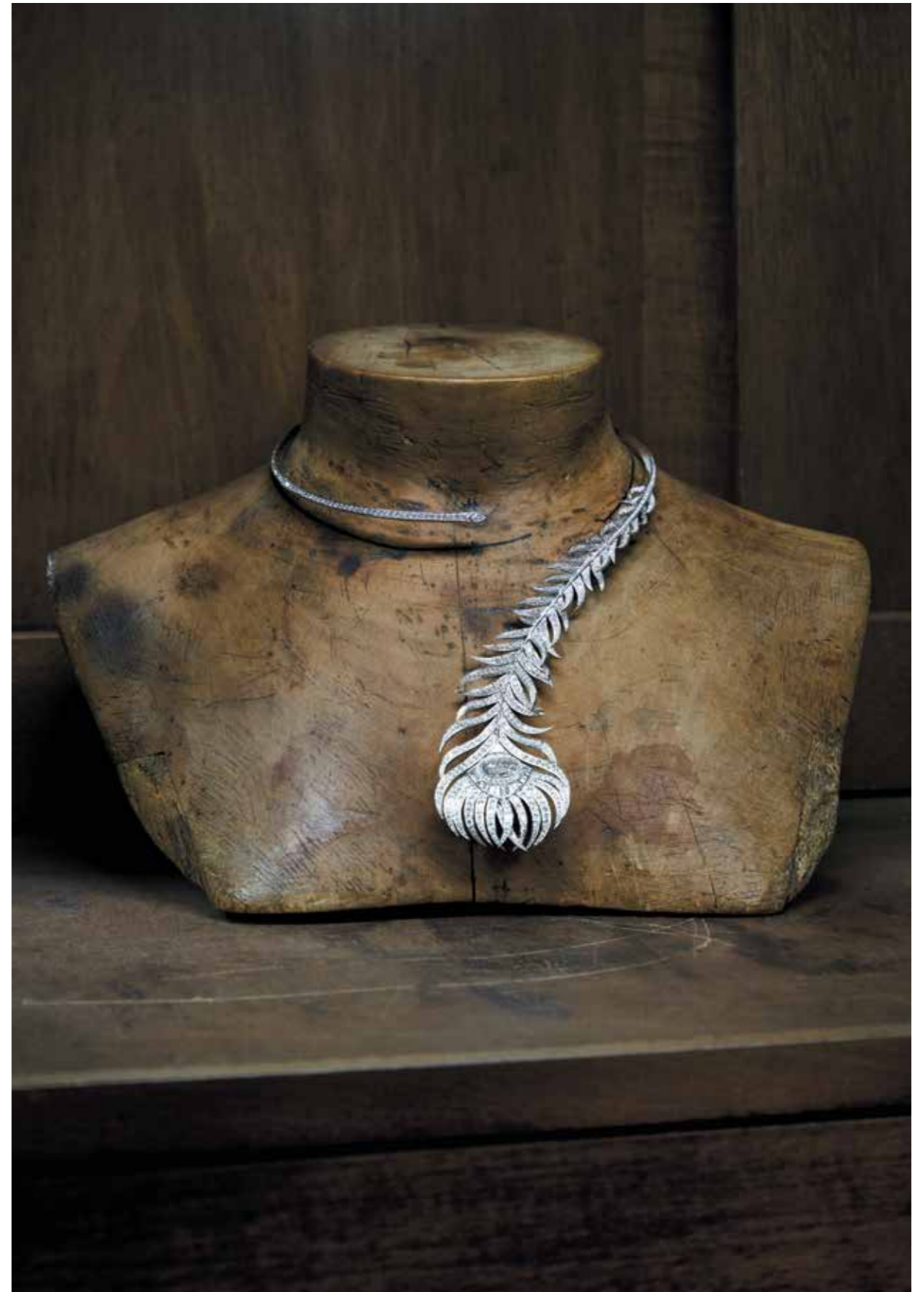


06. BLÉ D'ÉTÉ RING
PAVED WITH DIAMONDS, ON WHITE GOLD.



PLUMIE DE PAON

The peacock feather is one of the iconic Boucheron designs. It is dynamic, in motion and almost alive in all its variations. It features once again in the 26 Vendôme, on this diamond-set white gold necklace, a reinterpretation of the question mark from 1889. Both feathers and foliage, the bracelet coils delicately around the wrist. In its brooch version, the iconic peacock feather becomes a small group of birds taking flight in the distance.



07.



08.



07. PLUME DE PAON NECKLACE
SET WITH A ROSE-CUT DIAMOND,
PAVED WITH 808 DIAMONDS, ON WHITE GOLD.

08. PLUME DE PAON BROOCH
PAVED WITH DIAMONDS, ON WHITE GOLD.

09.



10.



09. PLUME DE PAON BRACELET
SET WITH A ROSE-CUT DIAMOND, PAVED WITH
DIAMONDS, ON WHITE GOLD.

10. PLUME DE PAON RING
SET WITH A 24,37 CTS MORGANITE, PAVED WITH
DIAMONDS, ON WHITE AND PINK GOLD.

11.



11. PLUME DE PAON EARRINGS
SET WITH ROSE-CUT DIAMONDS,
PAVED WITH DIAMONDS, ON WHITE GOLD.



ANIMAUX DE COLLECTION

Animals have always been part of the Boucheron world. They already roamed the first collections by House founder Frédéric Boucheron. The bestiary has been expanding ever since. The animals in this Triumphant Nature are inevitably wild and rebellious: free. The adorable deer appears to emerge from snowy undergrowth when draped with diamonds, and an October forest when encrusted with sapphires in autumnal colours. Finally, a geometric wolf holds a hypnotic, bewitching gaze, covered with yellow sapphires or white diamonds as though cut from a single block.



12.



13.



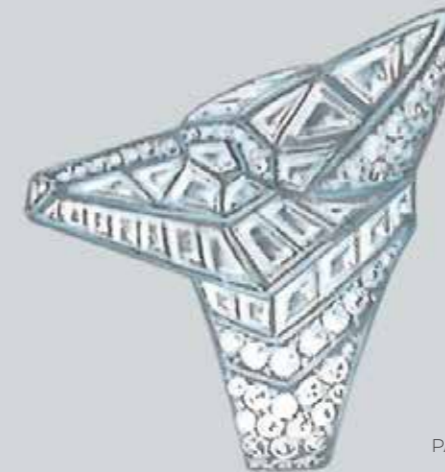
12. NARA, THE DEER RING
PAVED WITH DIAMONDS, BLACK SAPPHIRES,
ONYX, ON WHITE GOLD.

13. NARA, THE DEER RING
PAVED WITH DIAMONDS, BROWN DIAMONDS,
BLACK SAPPHIRES, ONYX, ON PINK GOLD.

14.



15.



14. THE WOLF RING
PAVED AND SET WITH YELLOW SAPPHIRES,
ON YELLOW GOLD.
CREATION IS BEING PRODUCED

15. THE WOLF RING
PAVED AND SET WITH DIAMONDS, ON WHITE GOLD.
CREATION IS BEING PRODUCED



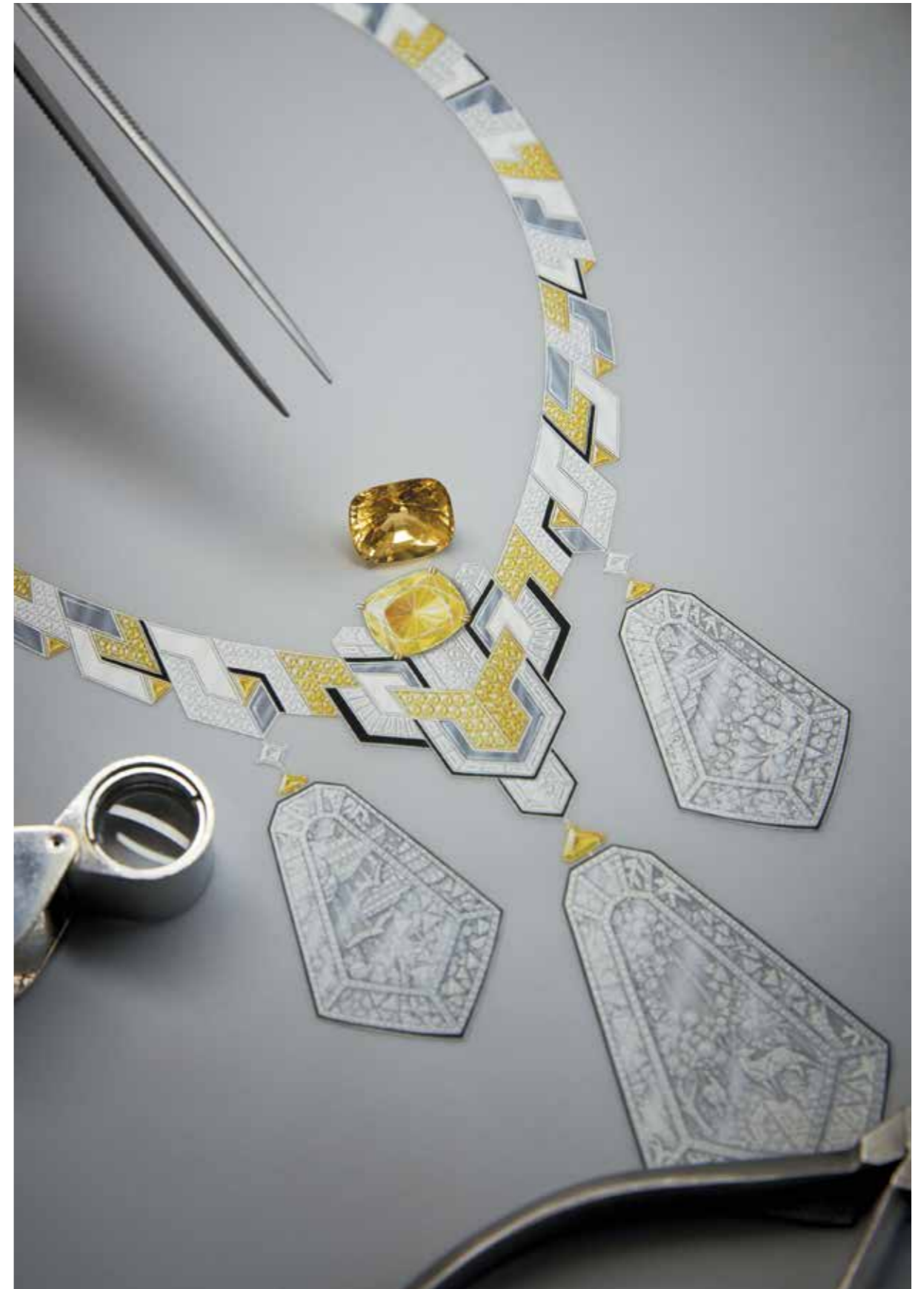
ARCHI TECTURE INSPIRÉE

Boucheron has always been an ardent admirer of abstraction, whether in geometrical perfection or the pure lines of Art Deco. Architecture Inspirée explores this other facet of the Maison.

The starting point for this journey through time and Parisian style begins in that very special hôtel particulier – or private residence – near the Palais Royal, where Frédéric and Gabrielle Boucheron first set up as jewellers. Then comes a reflection on the Place Vendôme's columns and arches, ending with a chequerboard transformed into a tumult of onyx and diamonds.

HÔTEL PARTICULIER

The Maison's first address, 152 Galerie de Valois, is central to the family history as the place where Frédéric and Gabrielle Boucheron started their business in 1858. This incredible necklace evokes both the atmosphere that reigned there and the view afforded by its various windows. A major piece in the collection, its alternating pavé-set yellow and white diamonds, grey moonstones, white mother-of-pearl, and lines of onyx recall the graphic pattern of No. 152's parquet flooring. At its centre, a magnificent 21.80-carat yellow sapphire radiates light like a dazzle of sunrays peeking through half-open shutters. Three rock crystal pendants recreate the view that the apartments enjoyed over the gardens of the Palais Royal. One last pendant represents the starry sky and serves as the necklace clasp. Three bucolic scenes – outstandingly sculpted and comprising hundreds of diamonds – form a romantic, yet realistic triptych of the vistas seen through the windows.



16.



38

17.



16. HÔTEL PARTICULIER NECKLACE

SET WITH A 21,80 CTS YELLOW SAPPHIRE, ROCK CRYSTAL,
WHITE MOTHER-OF-PEARL AND MOON STONES, PAVED WITH YELLOW
SAPPHIRES AND DIAMONDS, WITH BLACK LACQUER, ON WHITE GOLD.

17. HÔTEL PARTICULIER RING

SET WITH ROCK CRYSTAL, PAVED WITH DIAMONDS, ON WHITE GOLD.

18.



19.

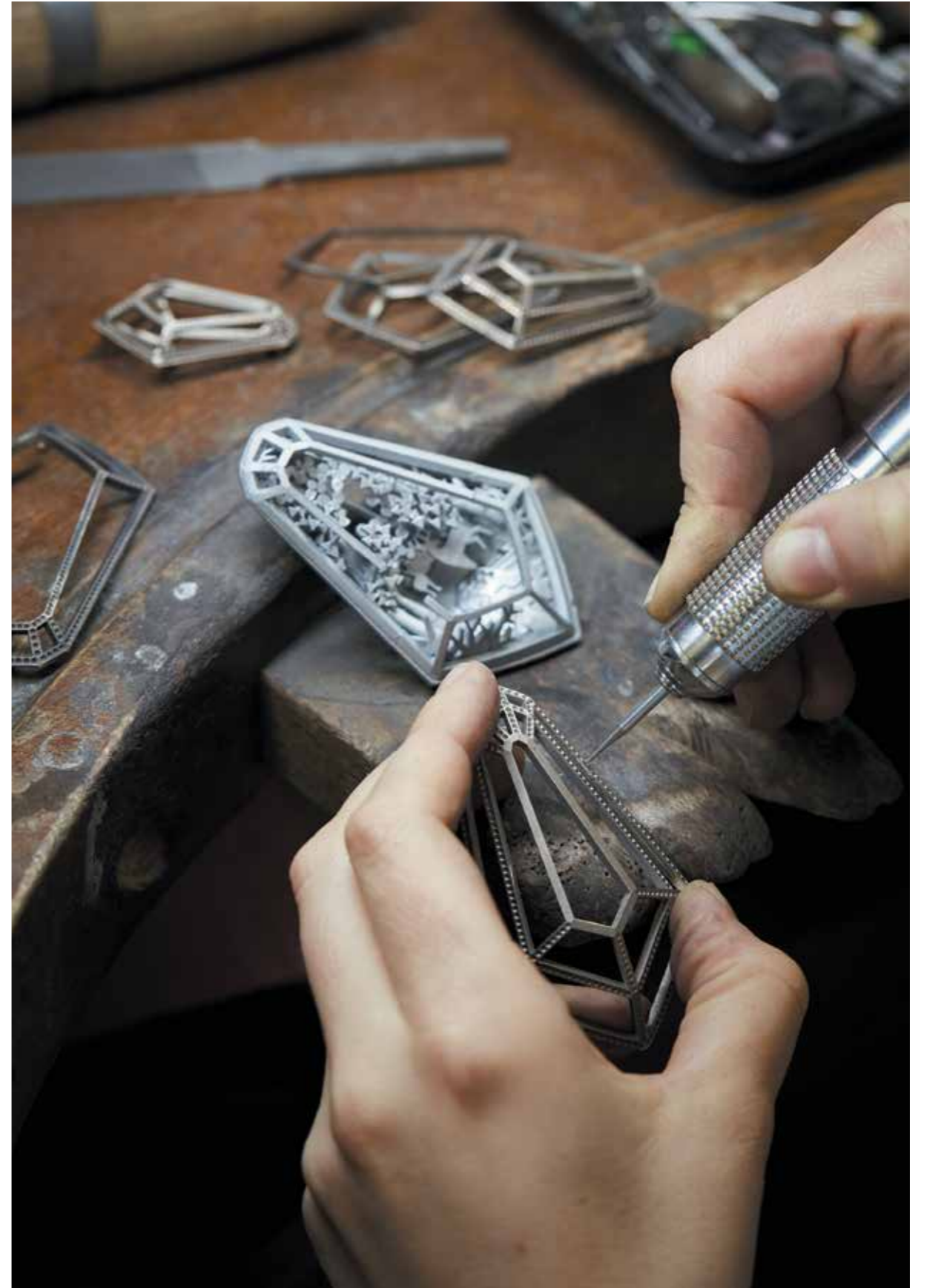


18. HOTEL PARTICULIER EARRINGS

SET WITH DIAMONDS AND YELLOW SAPPHIRES, PAVED WITH DIAMONDS
AND YELLOW SAPPHIRES, WITH BLACK LACQUER,
ON WHITE AND YELLOW GOLD.

19. HOTEL PARTICULIER RING

SET WITH A 7,75 CTS YELLOW SAPPHIRE, PAVED WITH DIAMONDS
AND YELLOW SAPPHIRES, WITH BLACK LACQUER,
ON WHITE AND YELLOW GOLD.



VENDÔME CHROMATIQUE ET ARGENTIQUE

The Place Vendôme boasts a majestic design and an infinity of perspectives – no wonder Frédéric Boucheron found it so inspiring. A rock crystal bracelet exalts the Parisian square, its profile recalling the surrounding arcades. An engraved emerald-cut beryl of 94,15-carat pays homage to its imposing central column, viewed from above. The necklace displays Boucheron's unique reinterpretation of the chevron – the ultimate Art Deco motif.



20.



21.



20. VENDÔME CHROMATIQUE NECKLACE
PAVED WITH DIAMONDS, YELLOW SAPPHIRES, WHITE AGATE,
WHITE MOTHER-OF-PEARL, ON WHITE AND YELLOW GOLD.

21. VENDÔME CHROMATIQUE BRACELET
SET WITH A 94,15 CTS BERYL AND ROCK CRYSTAL,
PAVED WITH DIAMONDS, ON YELLOW GOLD AND WHITE GOLD.
CREATION IS BEING PRODUCED

22.



48

23.



22. VENDÔME CHROMATIQUE RING
SET WITH A 28,83 CTS YELLOW SAPPHIRE
AND ROCK CRYSTAL, ON YELLOW GOLD.

23. VENDÔME CHROMATIQUE RING
SET WITH A 18,03 CTS MORGANITE
AND ROCK CRYSTAL, ON PINK GOLD.

24.



25.



24. VENDÔME ARGENTIQUE NECKLACE
PAVED WITH DIAMONDS, GREY AND WHITE
MOTHER-OF-PEARL, ONYX, ON WHITE GOLD.

25. VENDÔME ARGENTIQUE RING
SET WITH DIAMONDS, MOTHER-OF-PEARL AND ONYX,
ON WHITE GOLD.



DAMIER CABOCHON

This design showcases the classicism of Parisian hôtel particulier designs, and specifically the interior of the Boucheron family residence. Here the geometrical purity of an Art Deco chequerboard pattern is represented with diamonds contrasted against deep black onyx cabochons. The necklace, ring and bracelet all feature a play on the diameters of inset stones, revisiting the Maison's renowned chahuté technique.



26.



56

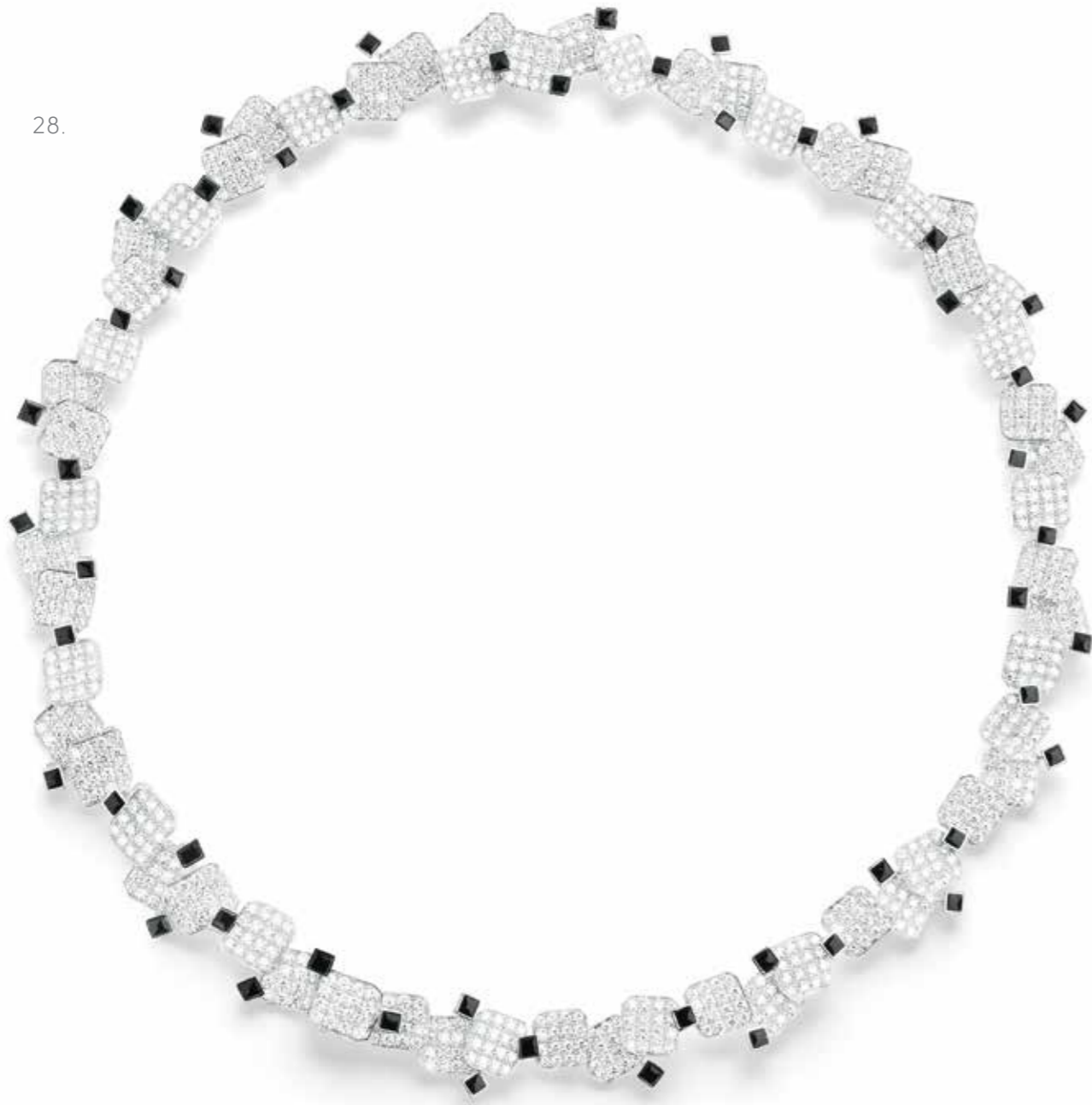
27.



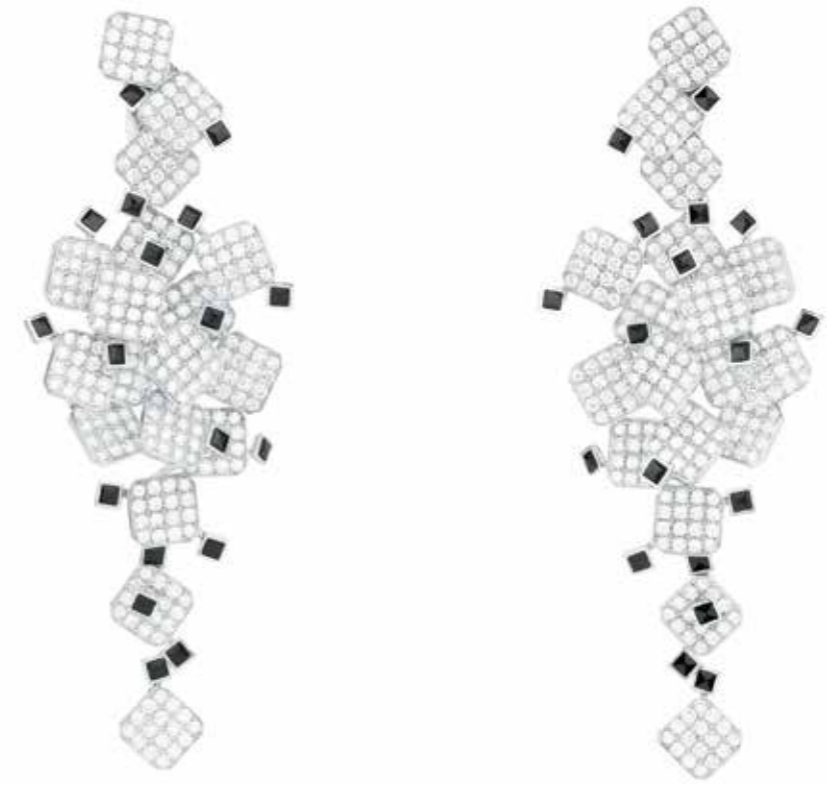
26. DAMIER CABOCHON NECKLACE
SET WITH A 9,18 CTS PEAR DIAMOND AND ONYX,
PAVÉ WITH DIAMONDS, ON WHITE GOLD.

27. DAMIER CABOCHON RING
SET WITH A 7,51 CTS DIAMOND AND BLACK LACQUER,
PAVÉ WITH DIAMONDS, ON WHITE GOLD.

28.



29.



28. DAMIER CABOCHON NECKLACE
PAVED WITH DIAMONDS AND ONYX, ON WHITE GOLD.

29. DAMIER CABOCHON EARRINGS
PAVED WITH DIAMONDS AND ONYX, ON WHITE GOLD.

30.



31.



30. DAMIER CABOCHON EARRINGS
PAVED WITH DIAMONDS AND ONYX, ON WHITE GOLD.

31. DAMIER CABOCHON RING
PAVED WITH DIAMONDS AND ONYX, ON WHITE GOLD.

32.



32. DAMIER CABOCHON BRACELET
PAVED WITH DIAMONDS AND ONYX,
ON WHITE GOLD.



PORTÉ COUTURE

With parents who were both drapers, Frédéric Boucheron's childhood was infused with memories of all kinds of fabric and materials. A mantle of light, a ripple of diamonds, a graphic ribbon made of emeralds and rubies – an array of pieces to wear like precious garments. Is it bejewelled couture, or hand-sewn jewellery? No matter. Here, the realms of Haute Couture and High Jewellery come together and fuse into one, with no way of telling which has the upper hand.

CAPE DE LUMIÈRE

With this Mantle of Light, Boucheron pushes back the boundaries that separate jewellery from clothing.

It was entirely created on a dressmaker's dummy to ensure perfect fit, drape and suppleness, and its elements are interconnected by a woven mesh of golden thread. The pattern is a modern, stylised version of a favourite inspiration, the peacock feather, «hand-sewn» by the Maison's artisan-jewellers. From the chiselled cut of the overall piece to the delicacy of its twisted chains inset with diamonds, this Mantle of Light stretches the limits of jewellery-making further than ever.



PORTÉ COUTURE
CAPE DE LUMIÈRE

PORTÉ COUTURE
CAPE DE LUMIÈRE

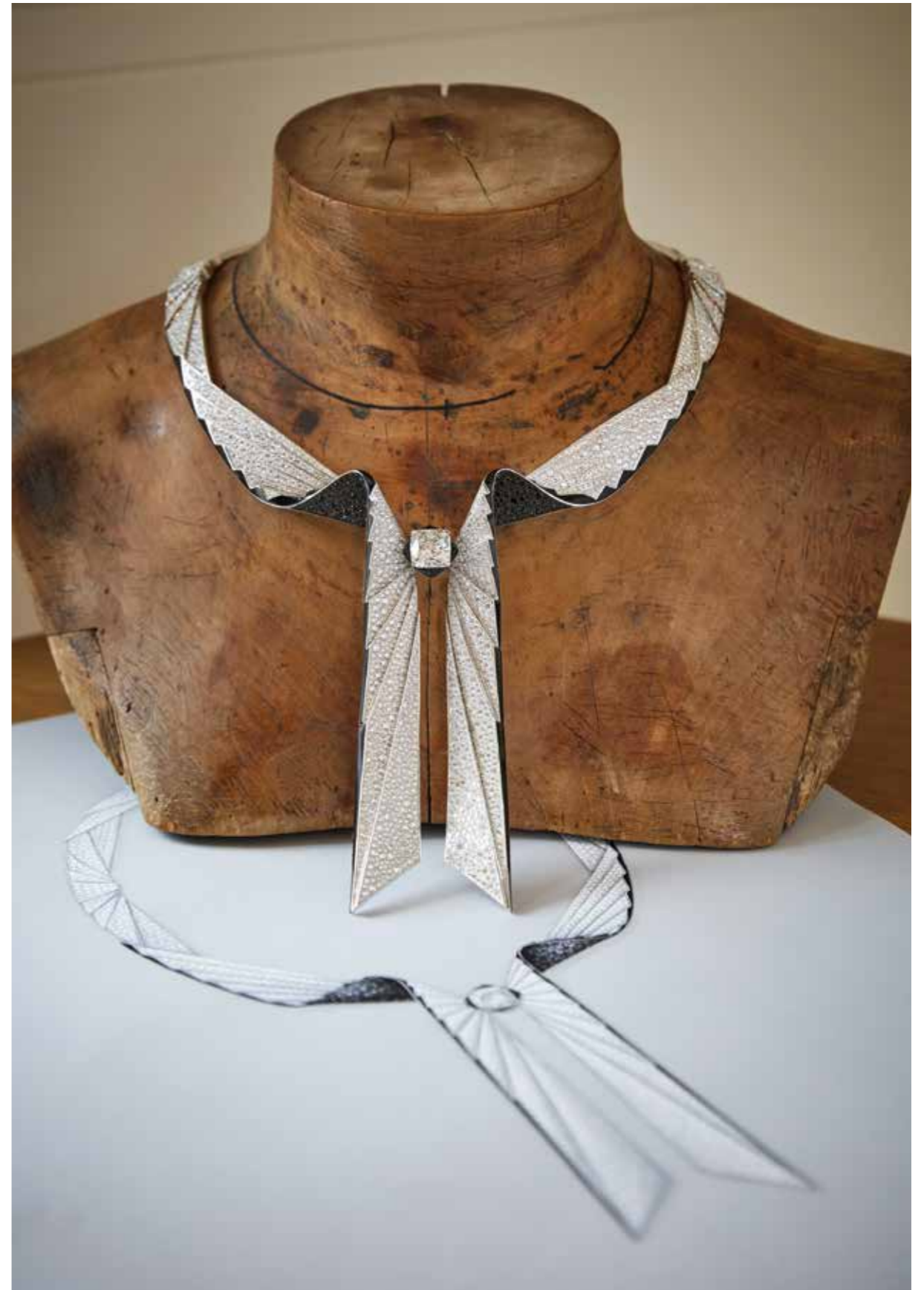
33.



33. CAPE DE LUMIÈRE
YELLOW GOLD-WOVEN,
SET WITH A 81,61 CTS CITRINE,
AND PAVÉ WITH DIAMONDS.

PLISSÉ DIAMANTS

As a subtle two-colour variation on black-and-white, this new creation stirringly reinterprets the pleats of a fabric in a piece of jewellery that falls around the cleavage like a scarf inset with tiny diamonds. The two sides come together around a 7.8-carat diamond that lets the jet-black spinels on the back show through. Earrings and brooch both recreate this striking perspective effect, worthy of a trompe l'oeil.



34.



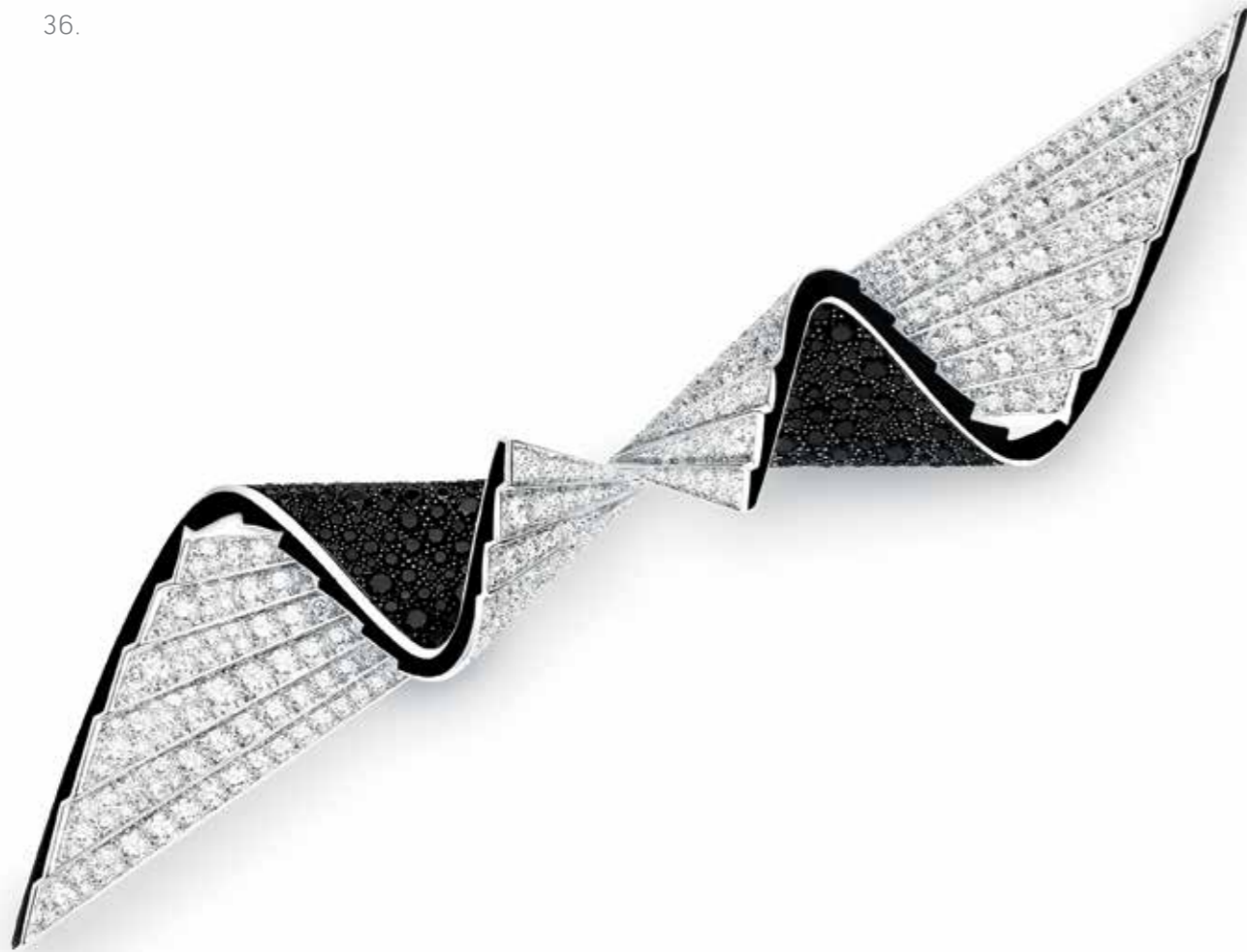
35.



34. PLISSÉ DE DIAMANTS NECKLACE
SET WITH A 7,81 CTS DIAMOND,
PAVED WITH DIAMONDS, BLACK SPINELS,
AND ONYX, ON WHITE GOLD.

35. PLISSÉ DE DIAMANTS EARRINGS
PAVED WITH DIAMONDS AND BLACK SPINELS,
ON WHITE GOLD.

36.



37.



36. PLISSÉ DE DIAMANTS BROOCH
PAVED WITH DIAMONDS AND BLACK SPINELS,
ON WHITE GOLD.

37. PLISSÉ DE DIAMANTS RING
SET WITH A 5,05 CTS DIAMOND,
PAVED WITH DIAMONDS, ON WHITE GOLD.

38.



38. PLISSÉ DE DIAMANTS RING
SET WITH A 4,02 CTS DIAMOND,
PAVED WITH DIAMONDS, ON PLATINUM.



RUBAN GRAPHIQUE

Here Boucheron revisits the traditional ribbon, paring down its contours to pure lines. A necklace is created from tiny cascading onyx beads that come together in an oversized bow around a 4.4-carat Colombian emerald. When the ribbon wraps around the finger in a delicate ring, it harbours a Colombian emerald of 3.7-carat or a 3-carat ruby from Mozambique.



39.



40.



BOUCHERON

39. RUBAN GRAPHIQUE NECKLACE
SET WITH A 4,45 CTS COLOMBIAN EMERALD,
EMERALDS, DIAMONDS, ONYX, BLACK LACQUER,
PAVED WITH DIAMONDS, ON WHITE GOLD.

40. RUBAN GRAPHIQUE RING
SET WITH A 3,70 CTS COLOMBIAN EMERALD,
BLACK LACQUER, PAVED WITH DIAMONDS
AND EMERALDS, ON WHITE GOLD.

41.



42.



41. CABOCHON RING

SET WITH A 3,99 CTS COLOMBIAN EMERALD
CABOCHON, ONYX, PAVED WITH DIAMONDS,
ON WHITE GOLD.

42. RUBAN GRAPHIQUE RING

SET WITH A 3,04 CTS RUBY FROM MOZAMBIQUE,
BLACK LACQUER, PAVED WITH DIAMONDS
AND RUBIES, ON WHITE GOLD.

43.



44.



43. JOY RING

SET WITH A 7,79 CTS BLACK OPAL FROM AUSTRALIA,
PAVED WITH DIAMONDS, ON WHITE GOLD.

44. JOYA RING

SET WITH A 27,55 CTS CEYLON STAR SAPPHIRE
CABOCHON AND DIAMONDS, PAVED WITH DIAMONDS,
ON WHITE GOLD.

45.



45. CABOCHON RING
SET WITH A 17,35 CTS CEYLON STAR SAPPHIRE
CABOCHON, PAVED WITH DIAMONDS,
ON WHITE GOLD.



BOUCHERON
PARIS